

Electric water circulation pump for general applications

Pierburg No.: 7.02058.50.0

Replaces: 7.02058.00.0

Pierburg now offers a compact, high-performance product, the electric water circulation pump (WCP).

In addition to the well-known applications such as

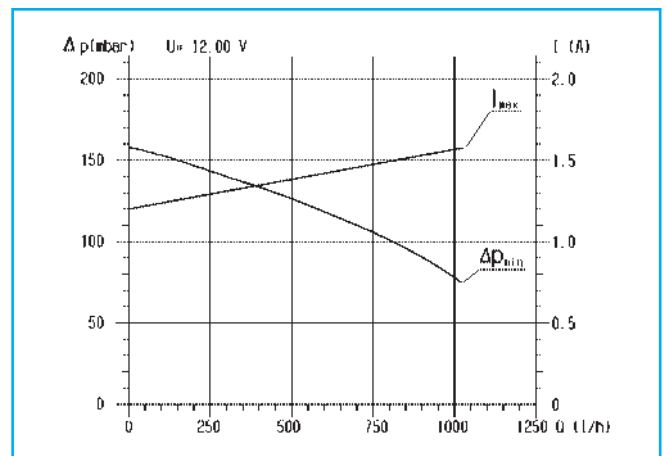
- removal of residual heat after the vehicle engine has been turned off (in connection with a radiator fan) and
 - a circulating pump in auxiliary heating systems to quickly warm up the interior of the vehicle,
- our WCP can also be used in numerous other applications such as:
- providing mechanical water circulation pumps with support when under critical operating conditions ("stop & go"),
 - cooling of batteries and drives in electric vehicles and
 - heat cycle pumps in the field of photovoltaics.

Features

- electric water circulation pump according to the turbine pump principle.
- Continuously variable speed due to pulse-width modulation control ("pulse-width repetition rate").
- Hermetic separation of the actual pump and the pump drive without any additional seals or ducts.
- The pump capacity does not depend on the speed of the engine in the vehicle.
- Compact construction due to electronically commutated engine.
- Quiet operation and very low noise production because there is only one moving part.
- The service life of the pump is practically only limited by the service life of the pump impeller bearing.



Overview of product




Typical characteristic pumping curve

Technical data		
Rated voltage	[V]	12
Operating voltage	[V]	9 - 15
Rated pumping pressure	[mbar]	100
Flow rate	[l/h]	mín. 820 ¹⁾
Power consumption	[A]	max. 1,5 ²⁾
Temperature range	[°C]	- 40 ... +135
Protection type		IP 54 A
Max. weight	[g]	max.280

1) at a differential pressure of 100 mbar
2) at the rated flow rate

Mounting position

The water circulation pump can be mounted in any orientation.

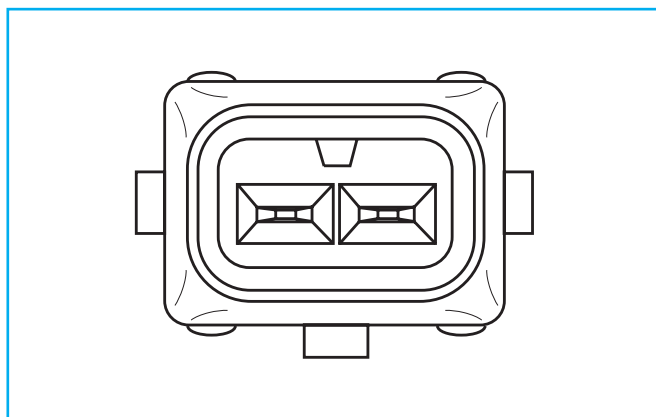
 The pump may not be mounted on the motor.

Electrical connection

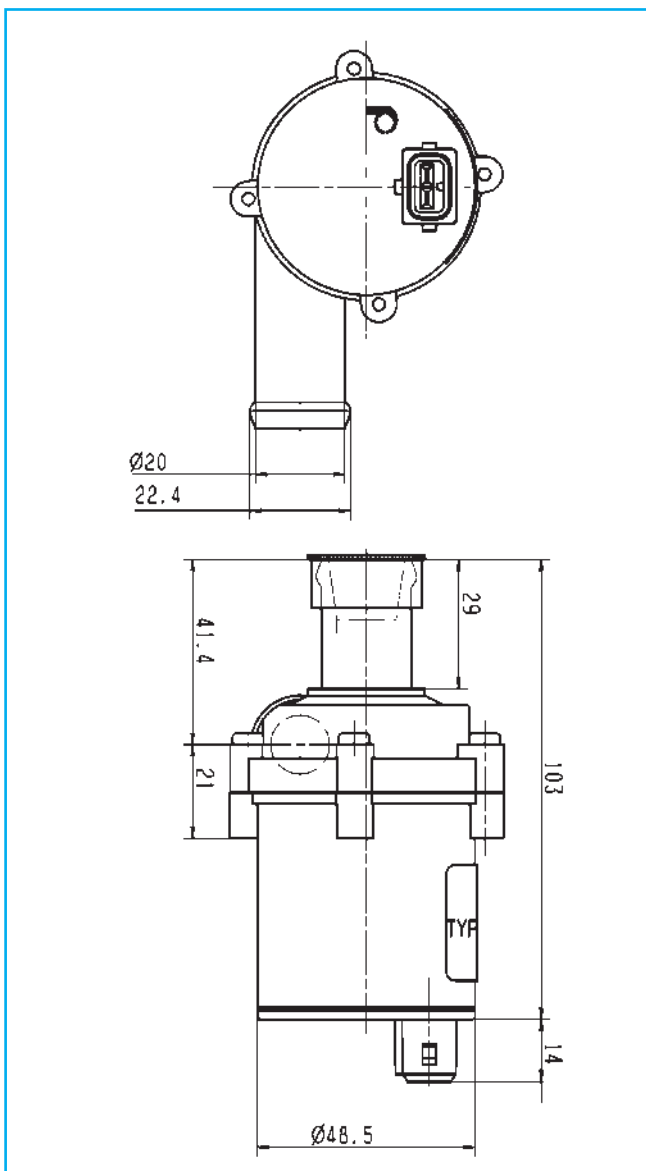
The electrical water circulation pump comes equipped with one connection for a 2-pole receptacle.

The following connectors can be used, for example:

- Reinshagen company: "MINI-TIMER AK 7509"
- Bosch company: "Junior Timer"



Electrical connection



Dimensions

Mounting clip (optional)

Pierburg No.: 4.07500.10.0 (10 parts)

As an option we offer a mounting clip made of vibration-reducing hard rubber (EPDM) to make mounting the water circulation pump easier.



Optional pump holder